



1 Wyresdale House

Worthing, BN11 3RE

Asking price £325,000

1 Wyresdale House

Worthing, BN11 3RE

James & James Estate Agents are delighted to offer for sale this Roffey built apartment forming part of the Lancaster Place development built approximately five years ago and offering the remainder of the New Homes Guarantee.

Boasting a long lease, residents & visitors parking and being situated close the beach, town and fantastic public transport services this GROUND FLOOR apartment is an ideal purchase for anyone looking for luxury accommodation within a highly sought after development and location.

In brief the accommodation comprises; Secure communal video entrance, spacious entrance hall, large open plan lounge/dining and luxury fitted kitchen, there are French doors opening onto a private patio, two double bedrooms, en suite, family bathroom, large utility room. Other benefits include under floor heating throughout and double glazing.

The property is offered for sale with no onward chain and in our opinion internal viewing is considered essential to appreciate the overall size and condition of this luxury apartment





Entrance Hall

Living Room
22' x 12'5 (6.71m x 3.78m)

Kitchen/Dining Area
23'0 9'5 (7.01m x 2.87m)

Large utility room
8'10 x 6'11 (2.69m x 2.11m)

Bedroom One
15'11 x 11'6 (4.85m x 3.51m)

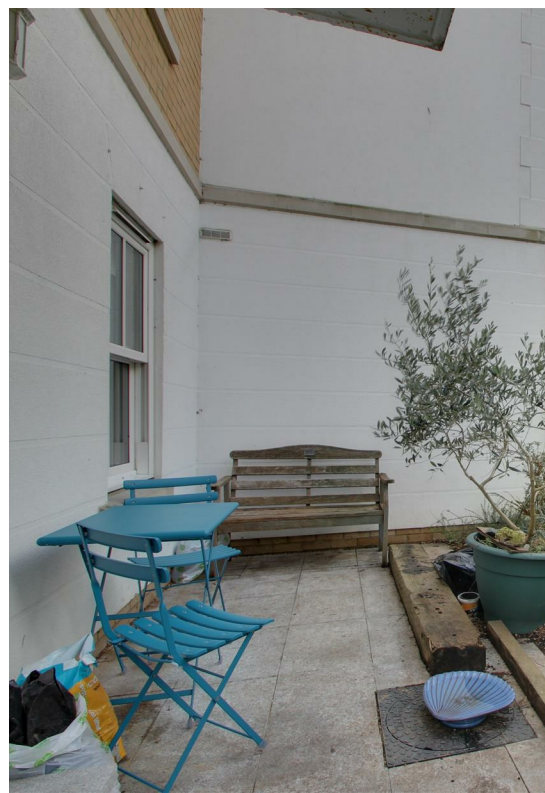
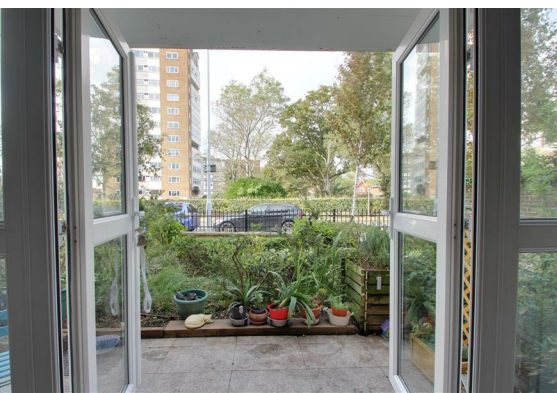
En Suite Shower Room

Bedroom Two
12'3 x 11'3 (3.73m x 3.43m)

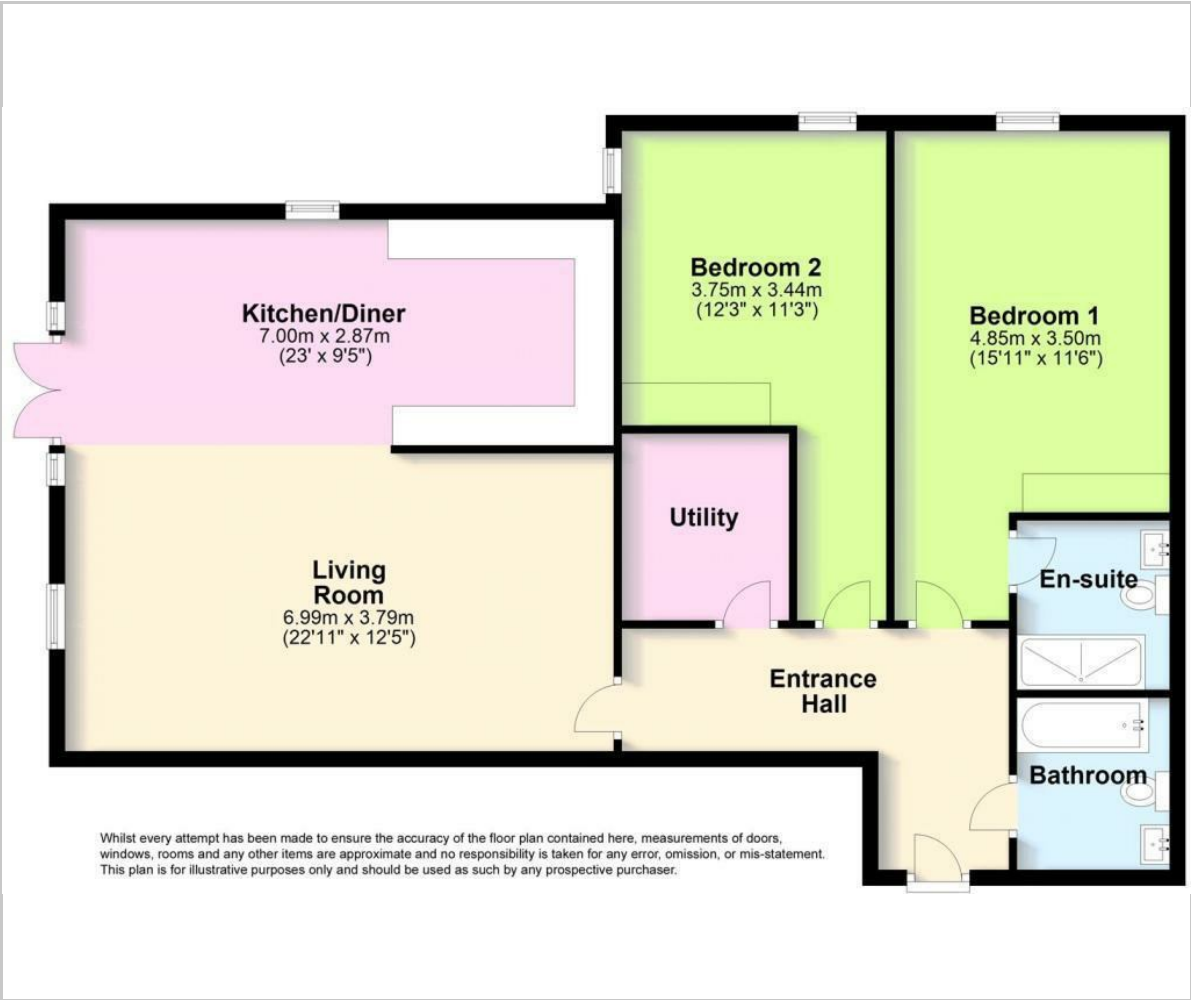
Luxury family bathroom

Private Patio

Allocated Parking Space



Floor Plan

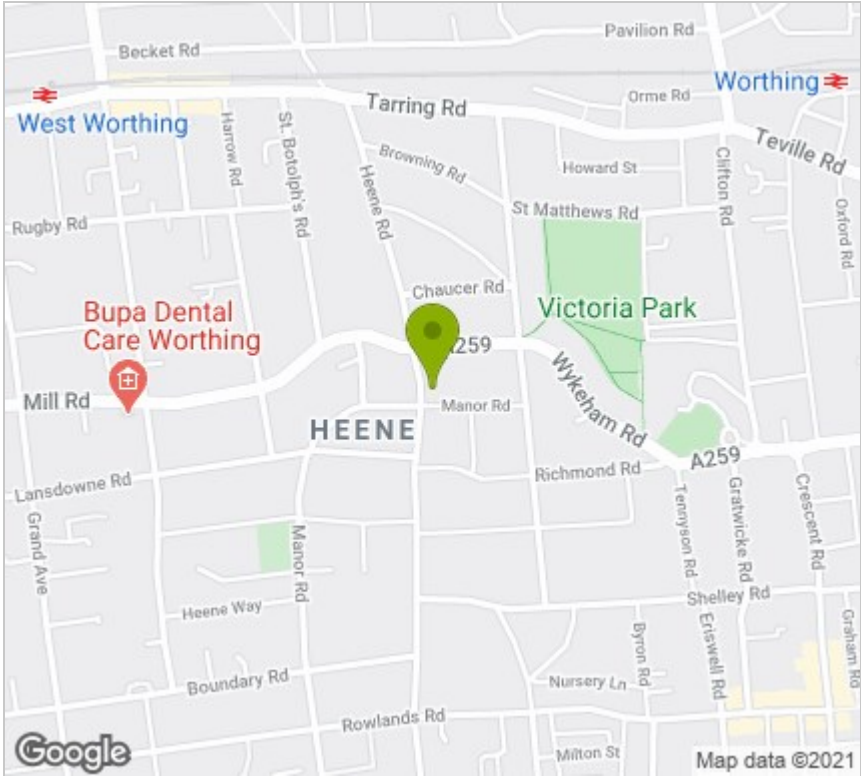


Viewing

Please contact our Worthing Office on 01903 958770 if you wish to arrange a viewing appointment for this property or require further information.

These particulars, whilst believed to be accurate are set out as a general outline only for guidance and do not constitute any part of an offer or contract. Intending purchasers should not rely on them as statements of representation of fact, but must satisfy themselves by inspection or otherwise as to their accuracy. No person in this firms employment has the authority to make or give any representation or warranty in respect of the property.

Area Map



Energy Efficiency Graph

